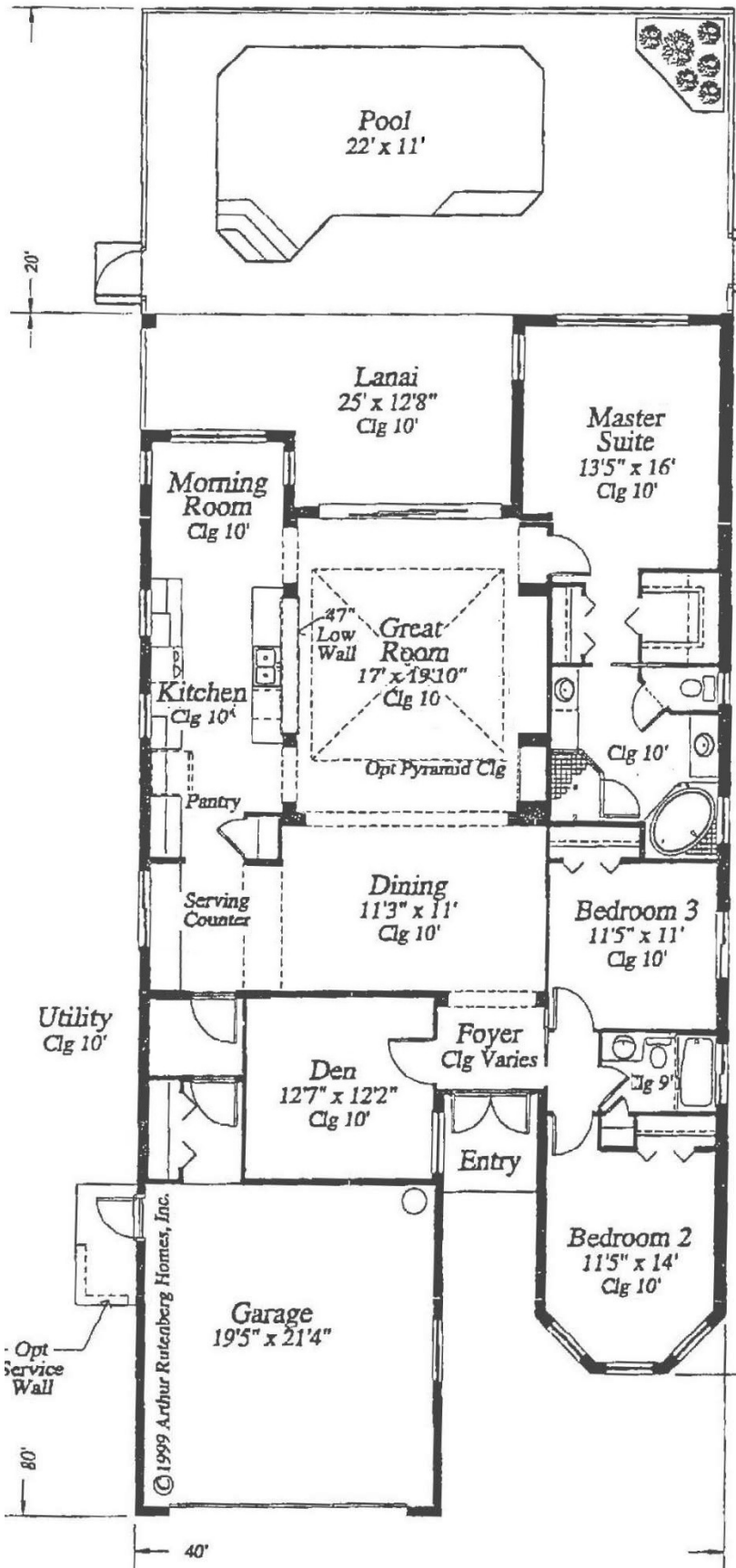


# San Marco IV



Living	2,153 S.F.
Lanai	1,054 S.F.
Garage	468 S.F.
Entry	41 S.F.
<b>Total</b>	<b>3,716 S.F.</b>

The foregoing information including, but not limited to, any information about the size or area of lots, structures, or living space, such as room dimensions, square footage calculations, or acreage is believed to be accurate, but is not warranted or guaranteed. This information should be independently verified before any person enters into a transaction based upon it.